

Fayette County

May 2009

# Health Beat

HEALTHY CHOICES • HEALTHY PEOPLE • HEALTHY COMMUNITIES

## Prevention of West Nile Virus

Now is the time of year for taking steps to protect yourself against mosquito-borne West Nile Virus. Many simple steps can be taken around the home to reduce your chances of contracting this potentially dangerous disease.



70 % of all West Nile Virus (WNV) cases are transmitted by the *Culex pipiens* mosquito. Also known as the house mosquito, this species breeds in still water, rich in organic content. The mosquito larvae must live in still water for five or more days to complete their growth cycle. Since most house mosquitoes are grown locally, because of this mosquito's limited flight range, removing

sources of standing water around your home can reduce the number of mosquitoes. For example, hundreds of mosquitoes can come from a single discarded tire.

Here are some steps you can take:

Get rid of old tires, cans, buckets, drums, bottles or any water holding containers.

≈Fill in or drain low places in the yard.

≈Keep drains, ditches and culverts free of weeds and trash so water will drain properly.

≈Keep roof gutters free of leaves and other debris.

≈Cover trash containers to keep out rainwater.

≈Repair leaky pipes and outside faucets.

≈Empty plastic wading pools at least once each week and store indoors when not in use.

≈Unused swimming pools should be drained and kept dry during the mosquito season.

≈Fill in tree rot holes and hollow stumps that hold water.

≈Change the water in bird baths and plant pots or drip trays at least once each week.

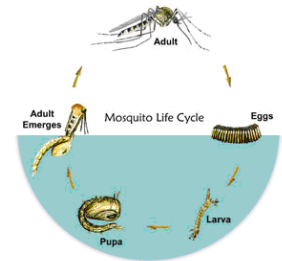
≈Store boats covered or upside down, or remove rainwater weekly.

≈Keep grass cut short and shrubbery well trimmed around the house so adult mosquitoes will not hide there.

≈Make sure ornamental ponds have fish that eat mosquito larvae.

≈Repair window screens

≈When outdoors in the evening or when mosquitoes are biting, use personal protection measures to prevent mosquito bites (proper use of DEET insect repellent and appropriate clothing)



Source: Illinois Department of Public Health; Mosquito Control and Prevention of West Nile Viral Encephalitis for Municipal Governments and Local Health Departments

# April 2009 Statistics

## **FAMILY & CLINICAL SERVICES**

### **WIC**

Active WIC Clients.....	830
WIC Services.....	316
Breast Feeding Women.....	34
Breast Feeding Peer Counseling.....	66

### **Family Case Management**

Active Families.....	315
EPSDTs.....	62
Pregnancy Tests.....	7
ASQ:SEs .....	82
Edinburghs.....	48
Denvers.....	96
Home Visits .....	14
APORS Visits .....	4
Healthwork Clients .....	11

### **Healthy Families Illinois**

Families Served .....	45
Home Visits.....	83
Assessments.....	5

### **Doula**

Families Served.....	15
Home Visits.....	38
Doula Assisted Deliveries.....	1

### **TPS**

Clients .....	11
Graduated High School/GED .....	0

### **Genetics**

Screenings .....	34
Clinics.....	0
Patients Seen In Clinic .....	0
Paternity testing.....	6

### **Immunizations**

Children.....	399
Adult .....	36
Lab Draws.....	41
Adult Injections.....	11

### **Lead**

Lead Screenings.....	22
Active Lead Cases.....	7

### **Flu**

Clinics.....	0
Flu Vaccinations .....	0
Pneumonia Vaccinations.....	0

### **Diabetes**

Diabetes Participants.....	350
New Participants Enrolled.....	4

### **Smoking Cessation**

New Break the Habit Smoking Cessation Clients .....	0
Tobacco Quitline Calls .....	12

### **Communicable Disease**

New Cases .....	4
Cases Closed .....	4

### **Sexually Transmitted Diseases**

STD Cases Received & Reported.....	2
------------------------------------	---

### **Tuberculosis**

Investigations .....	0
New Prophylactic Patients .....	0
New Active Cases .....	0
TB Tests.....	24
TB Screenings.....	5

## **HOME HEALTH**

Number of Current Patients.....	51
Total Served .....	64
Total Number of Visits .....	423
Foot Care.....	36

## **HOSPICE**

Number of Patients .....	15
Number of Volunteers.....	19
Families in Bereavement .....	138

## **ENVIRONMENTAL HEALTH**

### **Food Safety**

Inspections.....	7
Re-Inspections .....	0
Spot Checks .....	3
Complaints .....	3
Certifications.....	11
Re-Certifications .....	0
Pre-Openings.....	2

### **Tanning**

Inspections.....	2
Re-Inspections .....	0

### **Private Sewage**

Plan Approvals .....	8
Installations .....	5

### **Potable Water**

Wells Permitted.....	4
Wells Constructed.....	4
Water Samples .....	4
Non-Community .....	0

### **Complaints**

Sewage Complaints .....	2
Nuisance Complaints .....	0
Resolved Complaints.....	2
Referred Complaints.....	1

### **Wells Sealed.....**

### **Real Estate Surveys.....**

### **Sewage Compliance-**

### **Vandalia Lake.....**

### **West Nile Bird Submission.....**

### **Subdivision Review .....**

### **Rabies Specimen Submission.....**

## **Clinics**

### **By Appointment Only**

#### **Tuesdays 8:30-4:30**

- Lab Clinic
- Adult and Adolescent Immunizations
- TB testing

#### **Fridays (schedule varies)**

- Children's immunizations
- TB
- Lead screening